

December 15<sup>th</sup> 2008

Technical Service Bulletin ..... HB-1215-08

## Replacement of Center Steer Weldment on HB-1430

Custom Equipment has recognized that there may be a possible weld failure of the center steer weldment on some HB-1430 Hy-Brid machines. If you are experiencing any steer problems such as over-steering or a ratcheting noise from the steer actuator, a thorough inspection of the steer linkage should be performed. If upon inspection, you notice the center steer weldment is misaligned or appears to have failed, the part must be replaced with part number **HB-ST-4-PC-KIT** and a structural warranty claim can be filed to be reimbursed for the part cost.

Tools needed:

Vise Grip

Diagonal cutters

External snap ring pliers

9/16" combination wrench

9/16" socket and ratchet

**To replace this part the following sequence should be followed for maximum efficiency:**

Turn the wheels to the left so as to gain access to the actuator connecting bolt and tie rod connecting bolts.

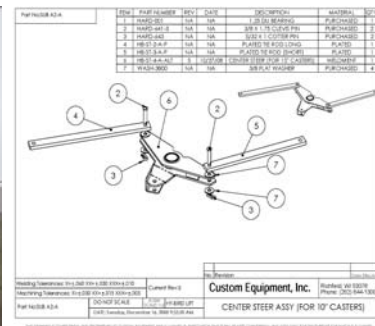
Raise the platform and install the maintenance safety lock pins in the holes marked on the front rails of the base.

Remove the actuator bar connecting bolt and save. Discard the old bronze bushing.

Remove the tie rod connecting bolts at the wheels and save.

Remove the snap ring holding the center steer weldment and discard.

Looking down at the assembly, rotate it clockwise to fold tie rods together and remove the complete steer assembly from the machine through the front top access. This will make it easier to access the cotter pins.



Remove both cotter pins and clevis pins connecting the tie rods to the steer weldment and discard. New pins and snap ring are provided in the kit.

Reassemble the steer assembly making sure the long tie rod is on the left side of steer weldment and that there is a flat washer between the tie rod and weldment. (see illustration)

Reinstall the assembly into the machine with tie rods folded as shown in the picture and rotate it counter clockwise to unfold tie rods.



Install the new snap ring making sure it is completely seated in the groove. Attach the actuator bar using the new bronze bushing and bolt with nylock nut. Attach tie rods using bolts & nylock nuts. **(be sure not to over tighten bolts)** No switch adjustments are needed.

Test steering for proper operation. Fill out paperwork and file warranty claim.

If there are any questions regarding this procedure, please contact me.

**Steve "Chappie" Chapman**

Service, Warranty, & Repair Parts Manager

(262) 644-1300 office

(262) 573-0396 cell

**Custom Equipment, Inc. / Hy-Brid Lifts**

[www.hybridlifts.com](http://www.hybridlifts.com)

[chappie@customequipmentlifts.com](mailto:chappie@customequipmentlifts.com)